

The background of the slide is a photograph of a vast, open landscape in Interior Alaska. In the foreground, three reindeer with large, dark antlers are walking across a field of dry, brownish grass. The middle reindeer is facing away from the camera, while the two on either side are facing left. In the background, there are rolling hills and mountains under a clear blue sky. The overall scene is bright and clear, suggesting a sunny day.

# **Arctic Boreal Vulnerability Experiment (ABoVE)**

## **2024 ABoVE L-band SAR Airborne Flights**

**24 August 2024 (DOY 237)**  
**Interior Alaska & Yukon Flats #2**

**Charles Miller, Deputy Science Lead**  
**Jet Propulsion Laboratory, California Institute of Technology**  
**Peter Griffith, Elizabeth Hoy**  
**Carbon Cycle & Ecosystems Office**  
**and the ABoVE Science Team**

**For Ryan Pavlick, Kathy Hibbard, Laura Lorenzoni, Bruce Tagg, Jack Kaye**  
**NASA HQ**  
**2024**



# 24 August 2024/DOY 237

## Interior Alaska & Yukon Flats #2



### Daily Summary:

- **C-20A (N802NA) L-band SAR ABoVE CAMPAIGN (CANADA / ALASKA)**
- REPORT DATE: 24 August 2024
- Current Status of Aircraft: **GREEN**
- Current Status of SAR: **GREEN**
- Current Status of PPA: **GREEN**
- Current Deployment Location: Fairbanks, AK (PAFA)
- Crew: Nelson, Phelps, Little, Ginn, Hoy, Austerberry, Powers, Tautuk, Orr
- Science Coordinator: N Pinto
- Science Lead: C Miller
- Project Manager: Y Lou





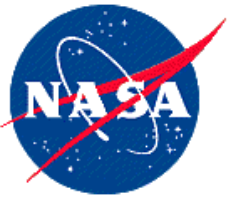
# 24 August 2024/DOY 237

## Interior Alaska & Yukon Flats #2



### Daily Summary:

- Fairbanks (PAFA) - Fairbanks (PAFA)
- Collected 9 of 9 data lines
- Flight Plan – Flight Plan 2129\_v01
- No fire smoke; minimal precip in domain; Cloudy - partly cloudy skies
- SWOT overpass on Fir 23 Aug



# 24 August 2024/DOY 237 Interior Alaska & Yukon Flats #2

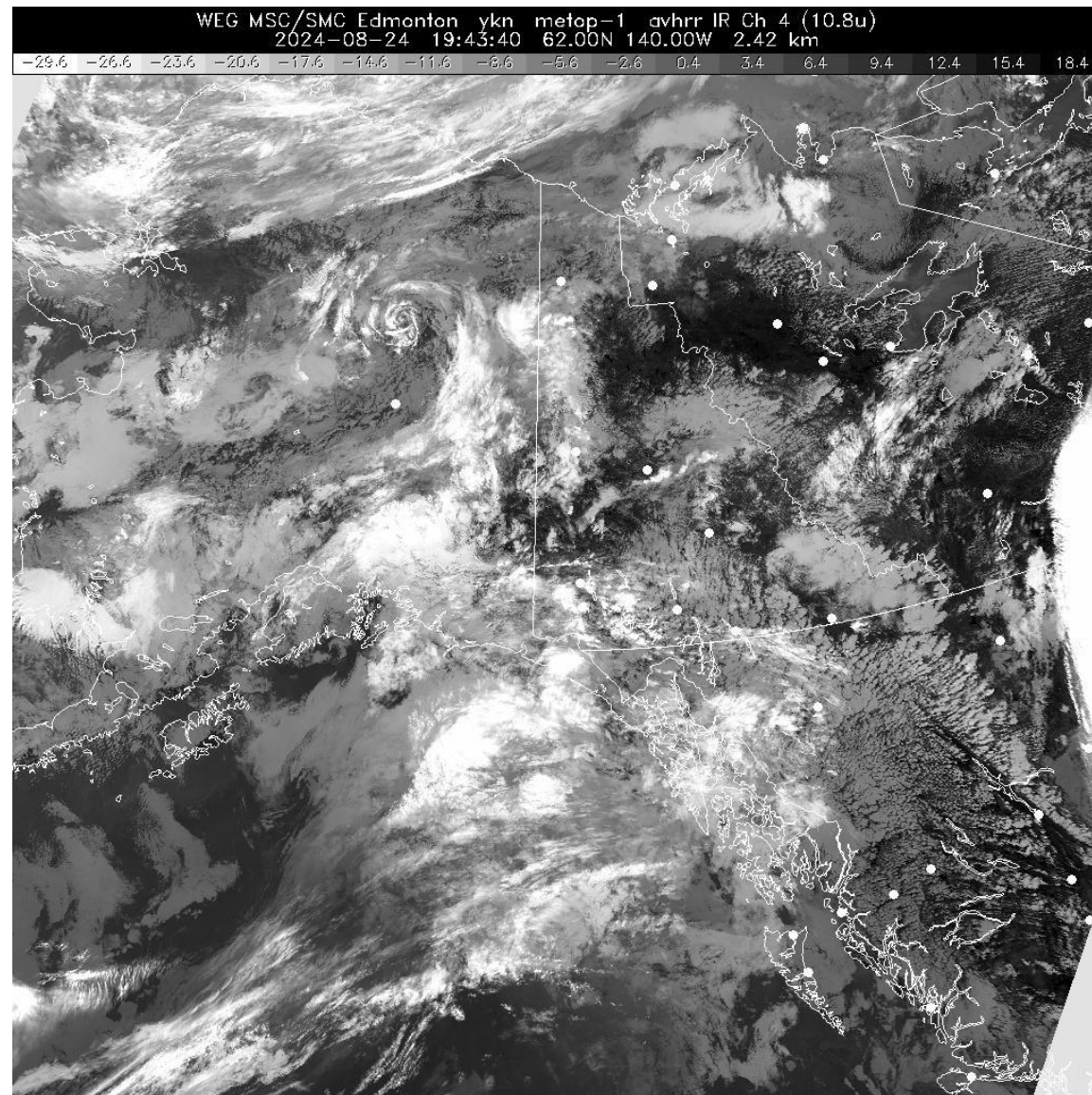
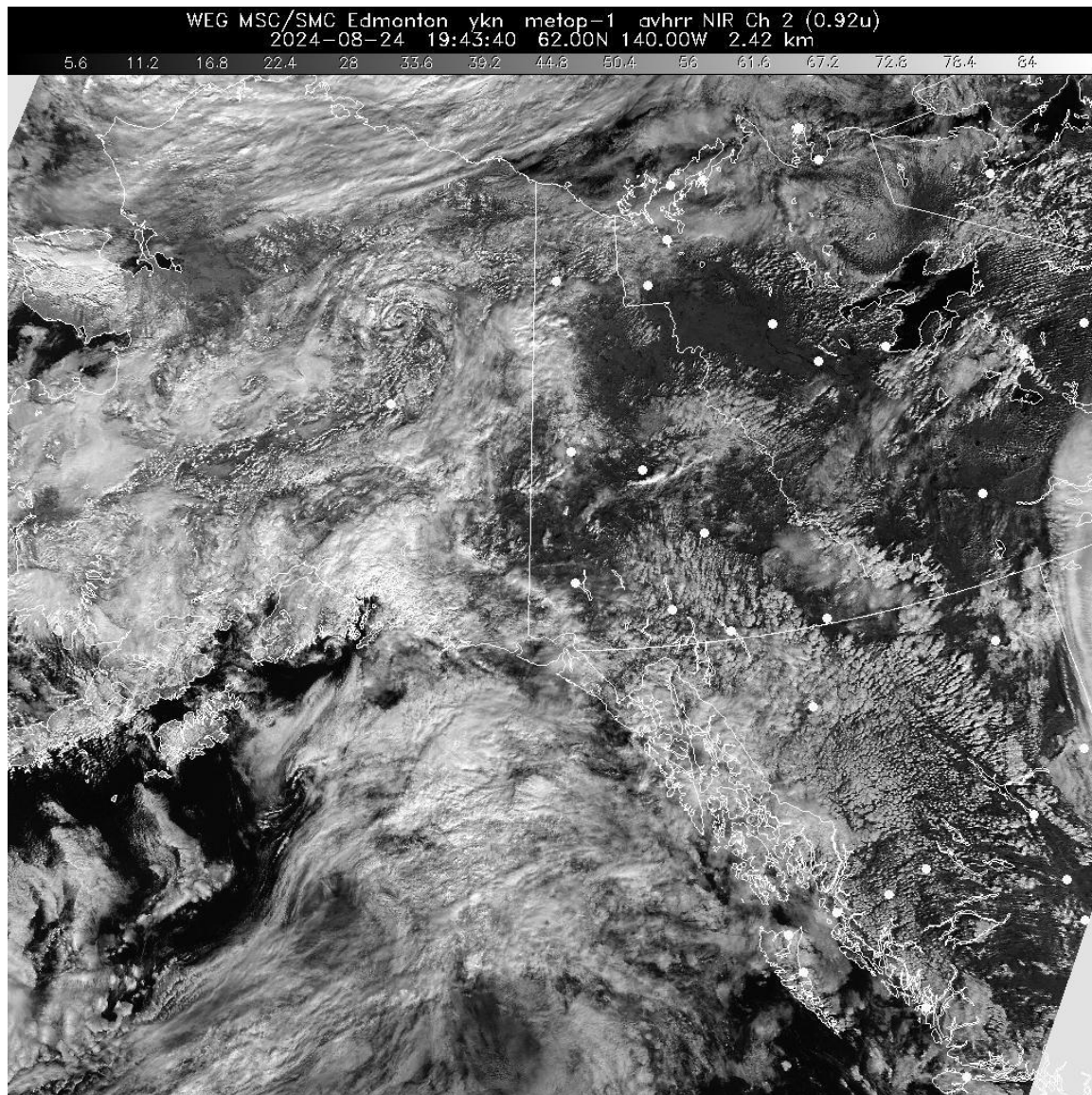






# 24 August 2024/DOY 237

## Interior Alaska & Yukon Flats #2

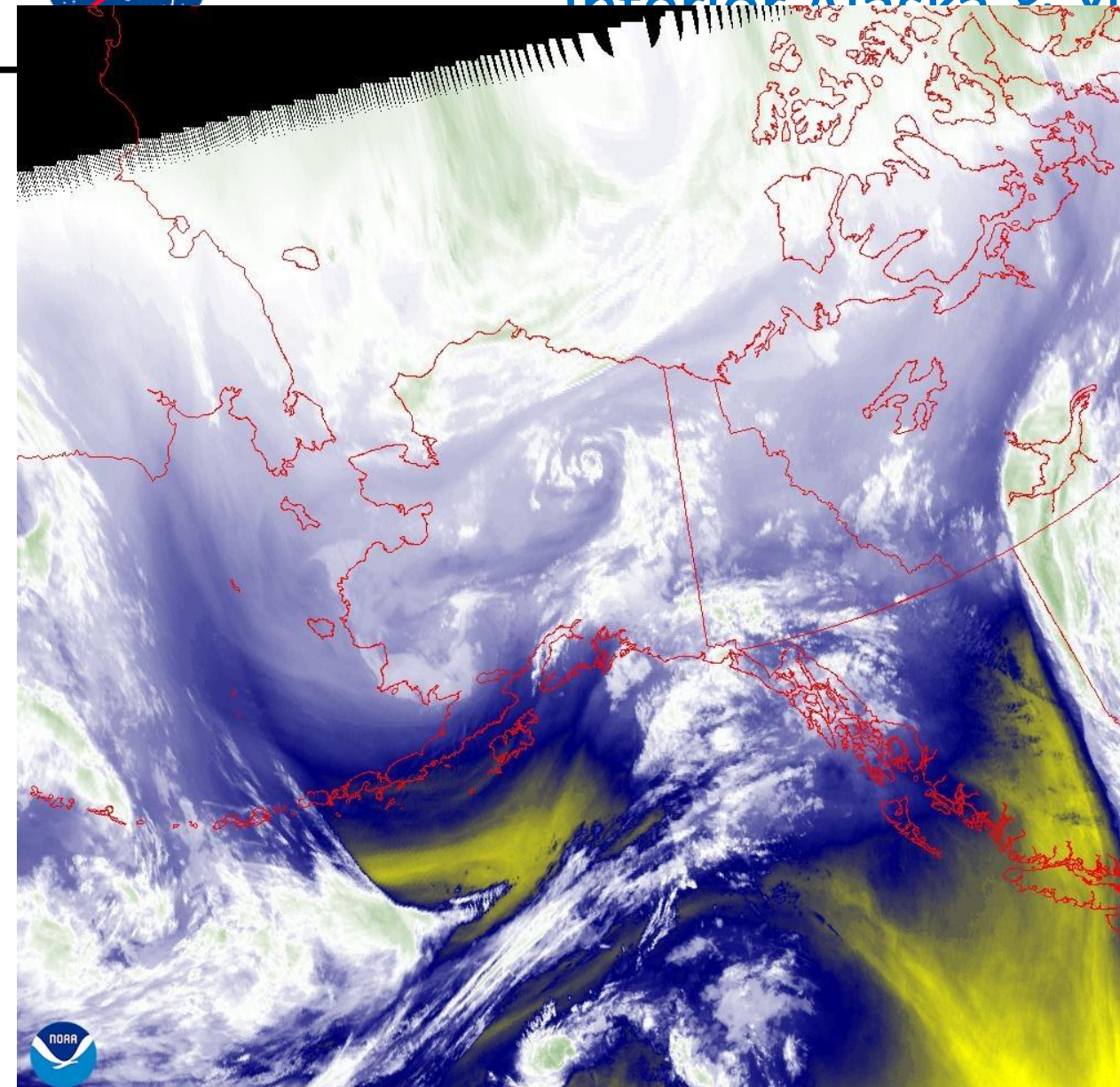




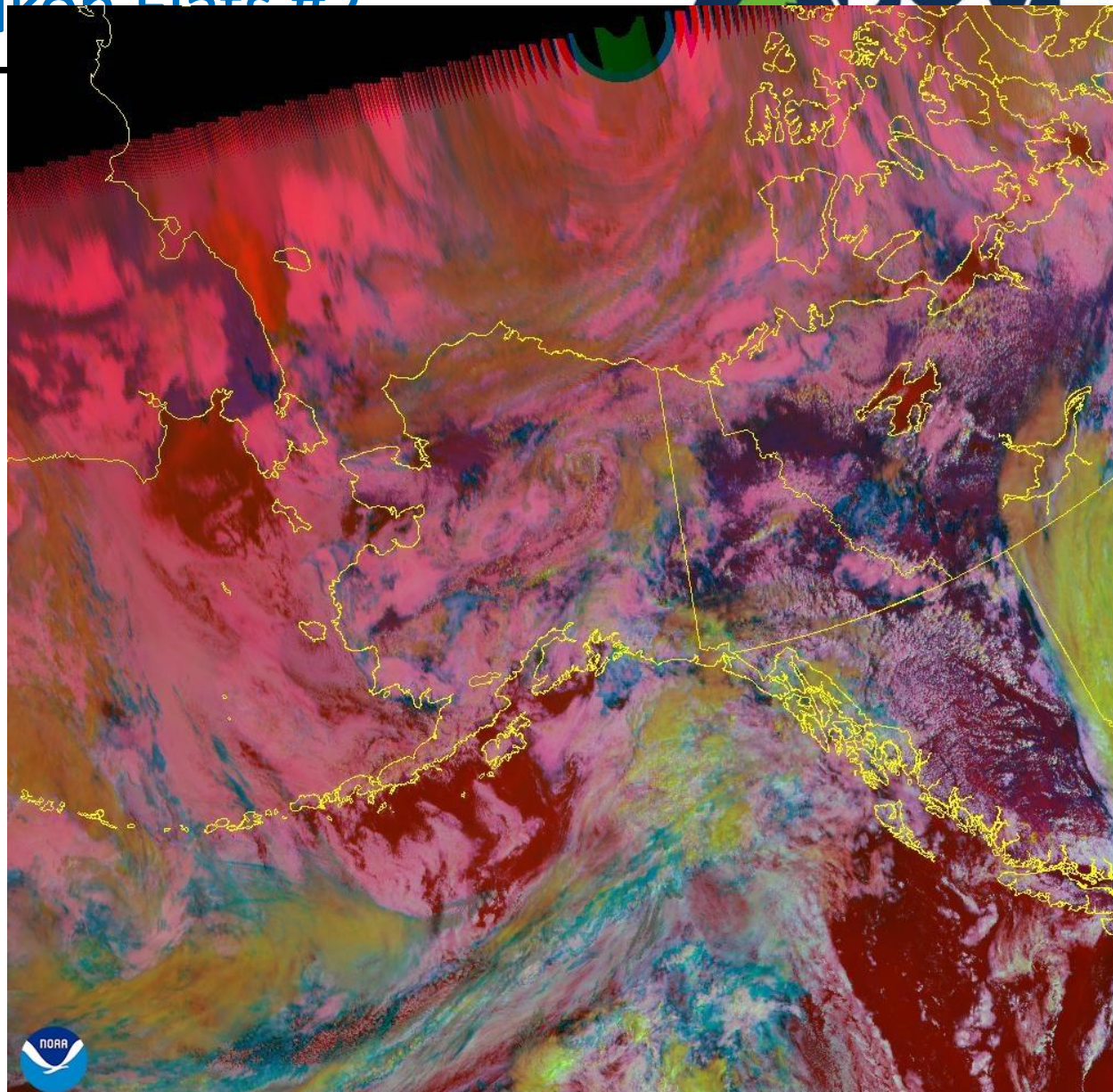


# 24 August 2024/DOY 237

## Interior Alaska & Yukon Flats #2



24 Aug 2024 19:40Z - NOAA/NESDIS/STAR - GOES-West - Band 10 - AK



24 Aug 2024 19:30Z - NOAA/NESDIS/STAR - GOES-West - DayNightCloudMicroCombo Composite - AK





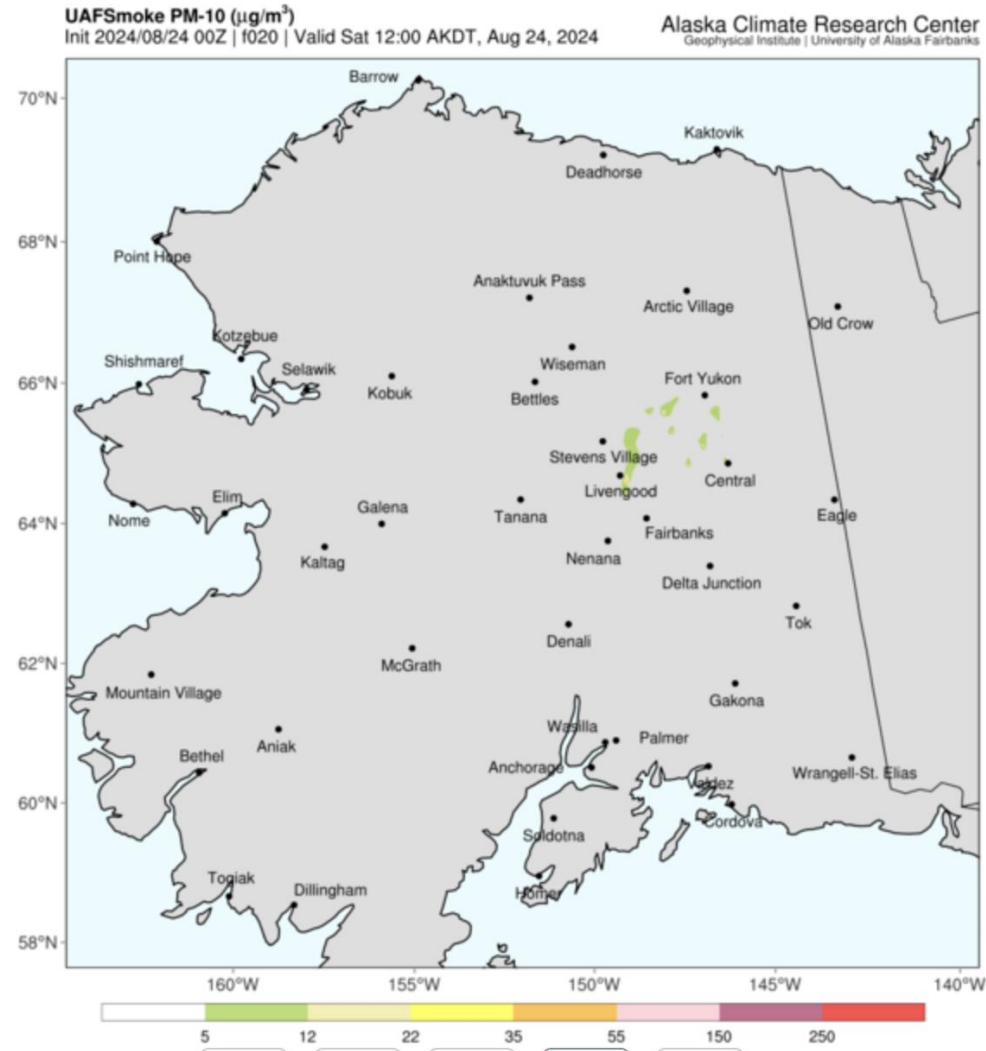
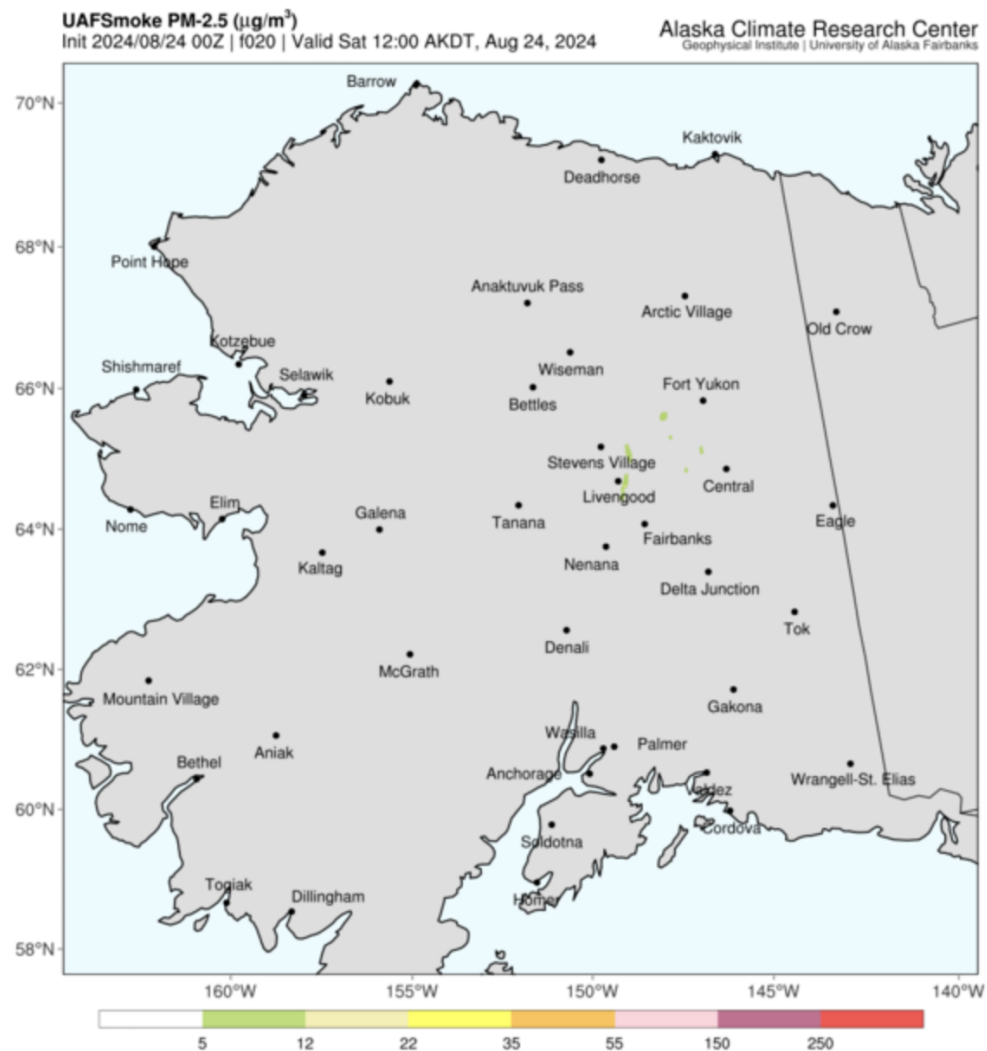
# 24 August 2024/DOY 237

## Interior Alaska & Yukon Flats #2



PM-2.5: Particulate Matter (smoke particles 2.5 micrometers or less in diameter) near surface level.  
(Loading slowly? [Click here](#) for a simpler animation.)

PM-10: Particulate Matter (smoke particles 10 micrometers or less in diameter) near surface level.  
(Loading slowly? [Click here](#) for a simpler animation.)







# 24 August 2024/DOY 237 Interior Alaska & Yukon Flats #2



Flight Plan Report: PLAN\_2129\_v01

[https://uavsar.jpl.nasa.gov/cgi-bin/report.pl?planID=PLAN\\_2129\\_v01#summary](https://uavsar.jpl.nasa.gov/cgi-bin/report.pl?planID=PLAN_2129_v01#summary)

## Data Acquisitions:

Line 1: ftyuko\_04707

Line 2: yflatE\_21609

Line 3: yflatW\_21508

Line 4: bonanW\_03603

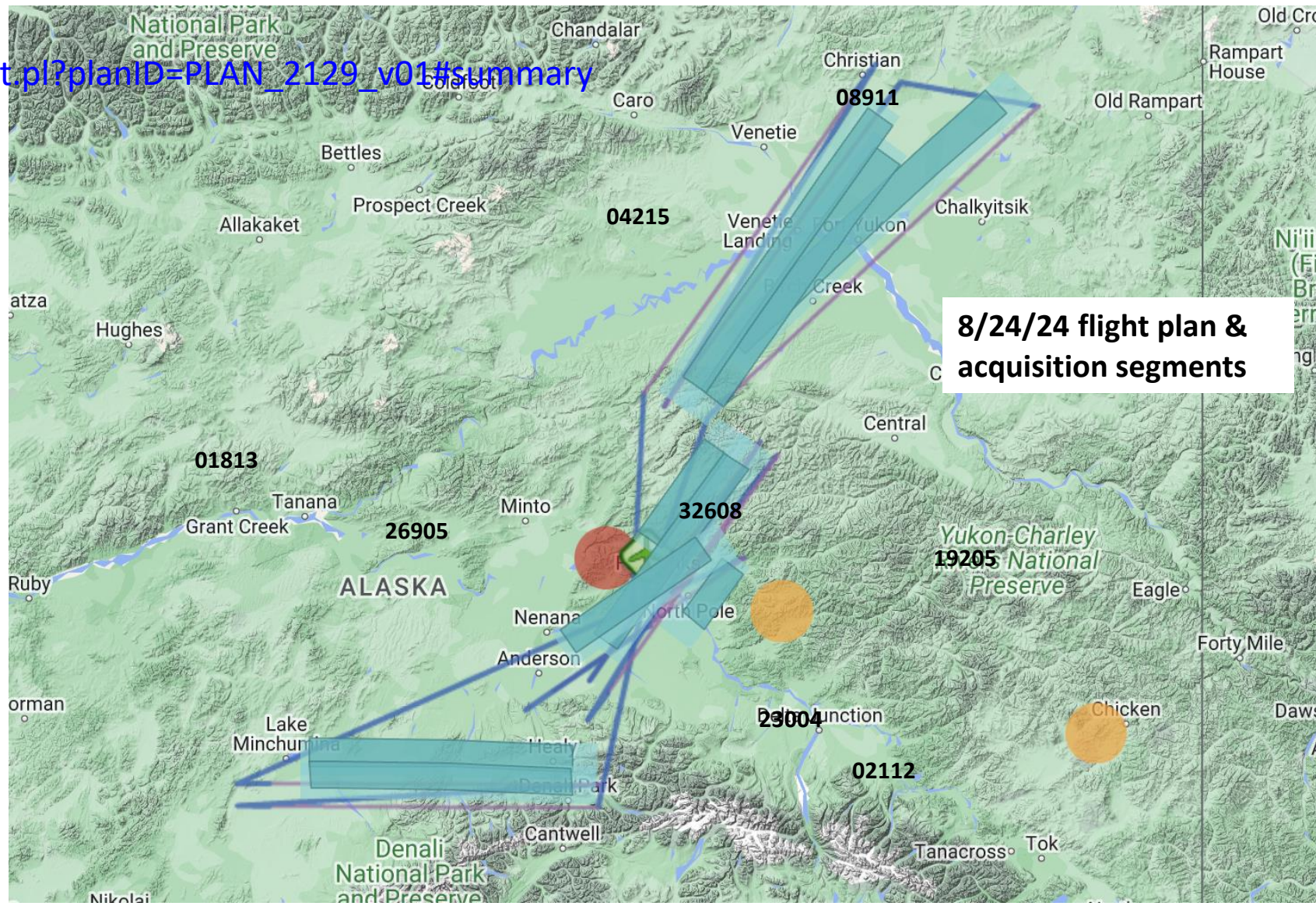
Line 5: bonanE\_03604

Line 6: HDZAOI\_21612

Line 7: bonanA\_05605

Line 8: denalN\_09115

Line 9: denalS\_09114







# 24 August 2024/DOY 237 Interior Alaska & Yukon Flats #2

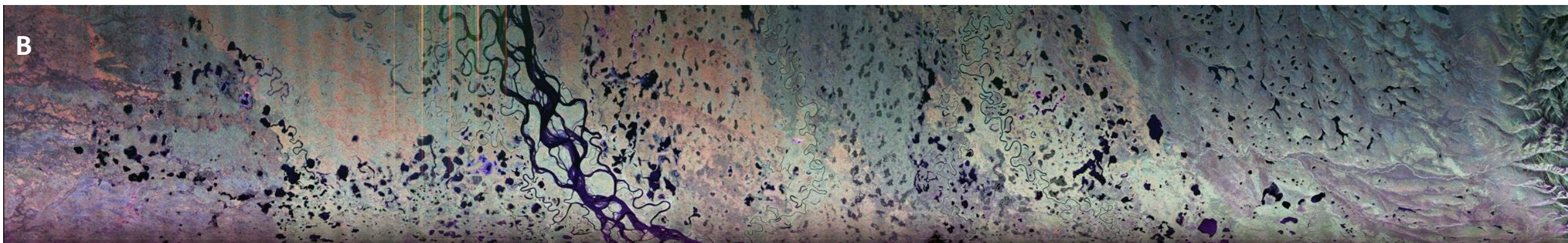
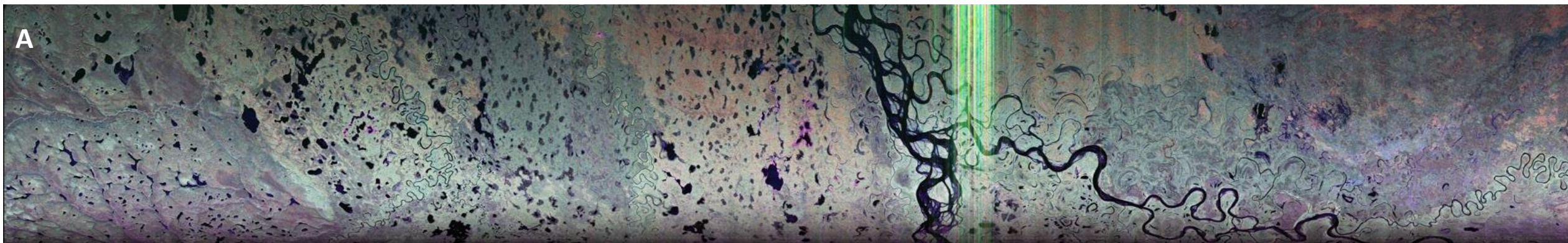


UAVSAR Quick-look products

A. Line 1: ftyuko\_04707

B. Line 2: yflatE\_21609

*Annemarie Peacock, JPL*







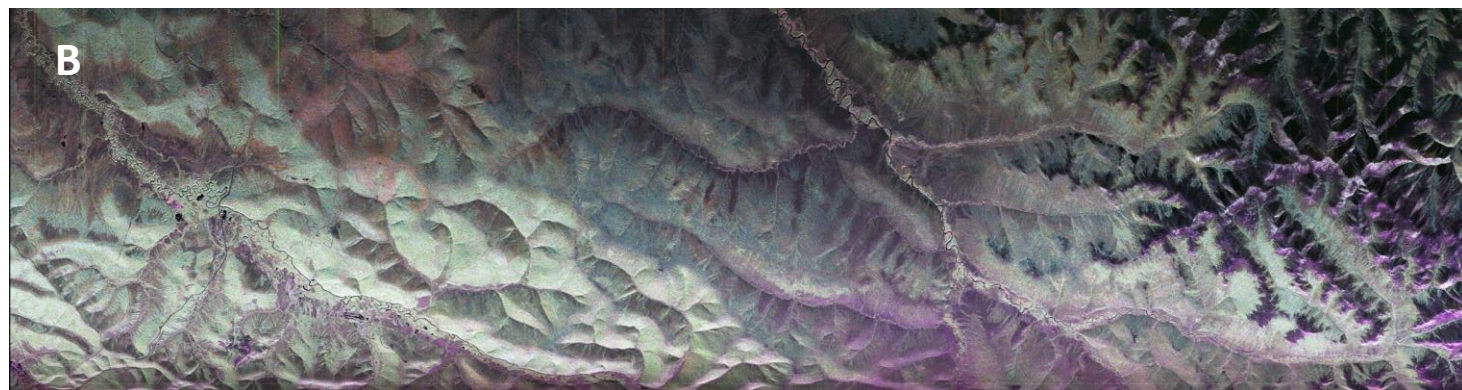
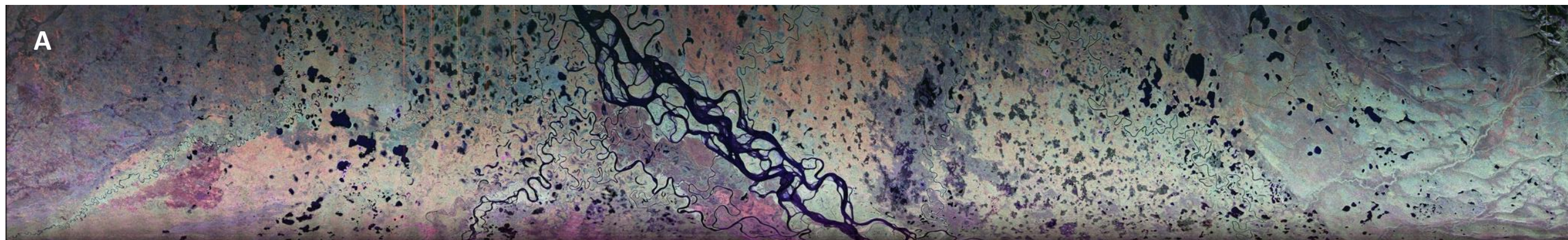
# 24 August 2024/DOY 237 Interior Alaska & Yukon Flats #2



UAVSAR Quick-look products

- A. Line 3: **yflatW\_21508**
- B. Line 4: **bonanW\_03603**

*Annemarie Peacock, JPL*







# 24 August 2024/DOY 237 Interior Alaska & Yukon Flats #2

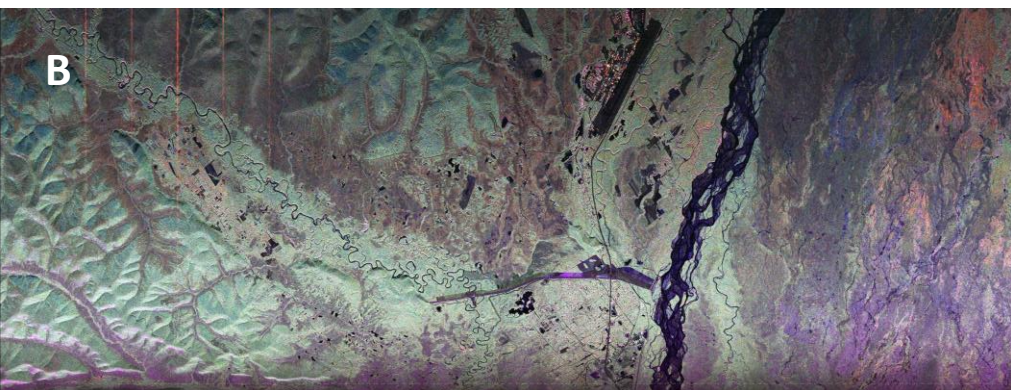
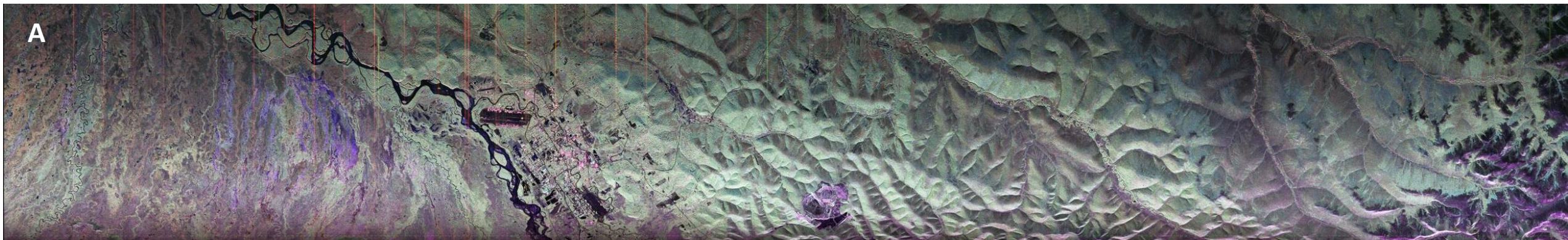


UAVSAR Quick-look products

A. Line 5: bonanE\_03604

B. Line 6: HDZAOI\_21612

*Annemarie Peacock, JPL*







# 24 August 2024/DOY 237

## Interior Alaska & Yukon Flats #2

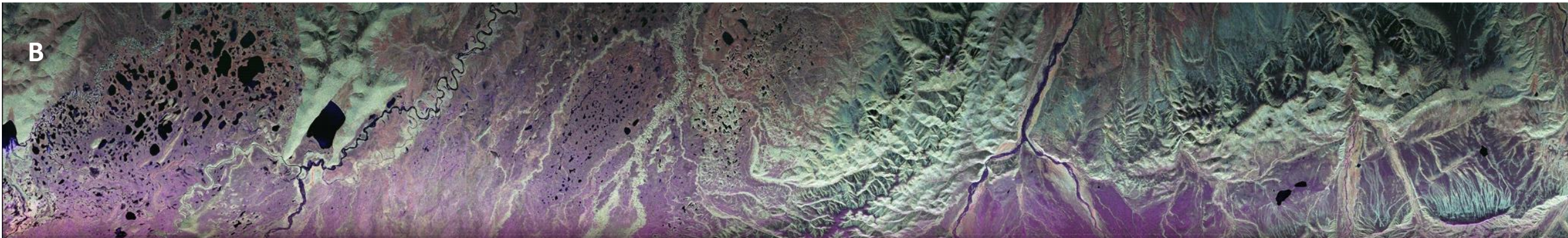
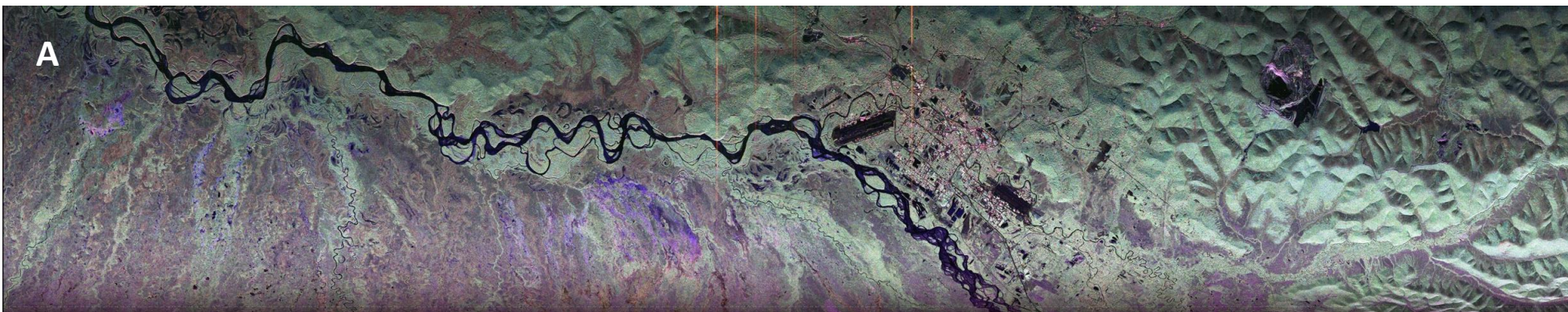


UAVSAR Quick-look products

A. Line 7: bonanA\_05605

B. Line 8: denalN\_09115

*Annemarie Peacock, JPL*







# 24 August 2024/DOY 237 Interior Alaska & Yukon Flats #2



UAVSAR Quick-look products  
A. Line 9: denalS\_09114

*Annemarie Peacock, JPL*







24 August 2024/DOY 237  
Interior Alaska & Yukon Flats #2



**BACKUP**





# 24 August 2024/DOY 237

## Interior Alaska & Yukon Flats #2



**Beaver (PAWB)** UTC:20:09 Local:12:09

Beaver (N) 20:06 08/24/24 (UTC) 12:06 08/24/24 (ADT)

FAA advisory weather product

CLEARDAY VISUAL REFERENCE

Site Elevation: 340' MSL

Airport <1.0 SM

Show Camera Loop

North (15°)	East (76°)	South (191°)	SouthWest (244°)

Weather Data | Weather Trends | PIREPs | RCO | Airport Info | NOTAMs (PilotWeb)





# 24 August 2024/DOY 237

## Interior Alaska & Yukon Flats #2



**Ft Yukon (PFYU)** UTC:20:09 Local:12:09

METAR PFYU 241956Z 24004KT 10SM FEW016 OVC033 09/06 A2968 RMK AO2 SLP061 T00940061 PNO \$

Fort Yukon (4N) 20:07 08/24/24 (UTC) 12:07 08/24/24 (AKDT)

FAA advisory weather product

CLEARDAY VISUAL REFERENCE

Site Elevation: 427' MSL  
No annotatable features

Show Camera Loop

North (15°)	East (75°)	South (170°)	West (270°)

Weather Data	Weather Trends	PIREPs	RCO	Airport Info	NOTAMs (PilotWeb)
--------------	----------------	--------	-----	--------------	-------------------





# 24 August 2024/DOY 237

## Interior Alaska & Yukon Flats #2



### Chalkyitsik (PACI)

UTC:20:10 Local:12:10

Chalkyitsik (N) 20:01 08/24/24 (UTC) 12:01 08/24/24 (AKDT)

FAA advisory weather product

CLEARDAY VISUAL REFERENCE

1700' MSL  
17.0 SM

Site Elevation: 551' MSL

Show Camera Loop

North (19°) East (75°) SouthWest (221°)

Weather Data Weather Trends PIREPs RCO Airport Info NOTAMs (PilotWeb)





# 24 August 2024/DOY 237 Interior Alaska & Yukon Flats #2



**Central (PACE)** UTC:20:10 Local:12:10

Central (N) 20:05 08/24/24 (UTC) 12:05 08/24/24 (AKDT)

**CLEARDAY VISUAL REFERENCE**

3000' MSL 7.0 SM      3400' MSL 7.5 SM

Site Elevation: 962' MSL

FAA advisory weather product

Show Camera Loop

North (350°)	NorthEast (64°)	SouthEast (140°)	

Weather Data    Weather Trends    PIREPs    RCO    Airport Info    NOTAMS (PilotWeb)





# 24 August 2024/DOY 237

## Interior Alaska & Yukon Flats #2



**Nenana Mun (PANN)** UTC:20:10 Local:12:10

METAR PANN 241953Z AUTO 22006KT 10SM FEW042 BKN050 11/06 RMK AO2 SLPNO T01060056 TSNO \$

Nenana (NE) 20:04 08/24/24 (UTC) 12:04 08/24/24 (AKDT)

CLEAR DAY VISUAL REFERENCE

700' MSL 3.0 SM  
900' MSL 6.0 SM

Site Elevation: 351' MSL

FAA advisory weather product

Show Camera Loop

 NorthEast (61°)	 South (181°)	 SouthWest (246°)	 NorthWest (336°)		
<a href="#">Weather Data</a>	<a href="#">Weather Trends</a>	<a href="#">PIREPs</a>	<a href="#">RCO</a>	<a href="#">Airport Info</a>	<a href="#">NOTAMS (PilotWeb)</a>





# 24 August 2024/DOY 237

## Interior Alaska & Yukon Flats #2



**Salcha (EILW)** UTC:20:10 Local:12:10

Salcha (NE) 20:02 08/24/24 (UTC) 12:02 08/24/24 (AKDT)

CLEARDAY VISUAL REFERENCE

Salcha Bluff  
1631' MSL  
6.3 SM

2850' MSL  
18.0 SM

Site Elevation: 1354' MSL

FAA advisory weather product

Show Camera Loop

NorthEast (35°)	SouthEast (150°)	SouthWest (240°)			
Weather Data	Weather Trends	PIREPs	RCO	Site Info	NOTAMs (PilotWeb)





# 24 August 2024/DOY 237

## Interior Alaska & Yukon Flats #2



**Delta Junction (BIG)** UTC:20:10 Local:12:10

Delta Junction (NE) 20:08 08/24/24 (UTC) 12:08 08/24/24 (AKDT)

**CLEARDAY VISUAL REFERENCE**

2450' MSL 14.0 SM  
3500' MSL 18.5 SM

Site Elevation: 1145' MSL

FAA advisory weather product

Show Camera Loop

NorthEast (25°)	SouthEast (120°)	South (188°)			
Weather Data	Weather Trends	PIREPs	RCO	Site Info	NOTAMs (PilotWeb)





# 24 August 2024/DOY 237

## Interior Alaska & Yukon Flats #2



**Mc Kinley Natl Park (PAIN)** UTC:20:10 Local:12:10

METAR PAIN 241956Z AUTO 03005KT 10SM -RA OVC030 07/05 A2970 RMK A02 SLP073 P0000 T00720050

McKinley Park (N) 20:05 08/24/24 (UTC) 12:05 08/24/24 (AKDT)

CLEARDAY VISUAL REFERENCE

4000' MSL 4.0 SM  
2500' MSL 5.0 SM  
Site Elevation: 1740' MSL

Show Camera Loop

 North (9°)	 SouthEast (117°)	 South (159°)	 West (258°)		
Weather Data	Weather Trends	PIREPs	RCO	Airport Info	NOTAMs (PilotWeb)





# 24 August 2024/DOY 237

## Interior Alaska & Yukon Flats #2



**Minchumina (PAMH)** UTC:20:10 Local:12:10

METAR PAMH 241956Z AUTO 0000KT 10SM OVC046 08/06 A2971 RMK AO2 SLP060 T00780056 TSNO PNO \$

Minchumina (NE) 20:02 08/24/24 (UTC) 12:02 08/24/24 (AKDT)

**CLEAR DAY VISUAL REFERENCE**

1500' MSL 7.5 SM  
Shore 5.0 SM

Site Elevation: 698' MSL

FAA advisory weather product

Show Camera Loop

 NorthEast (60°)	 SouthEast (147°)	 SouthWest (205°)			
<a href="#">Weather Data</a>	<a href="#">Weather Trends</a>	<a href="#">PIREPs</a>	<a href="#">RCO</a>	<a href="#">Airport Info</a>	<a href="#">NOTAMs (PilotWeb)</a>